



# Sonoma County Board of Supervisor, David Rabbitt



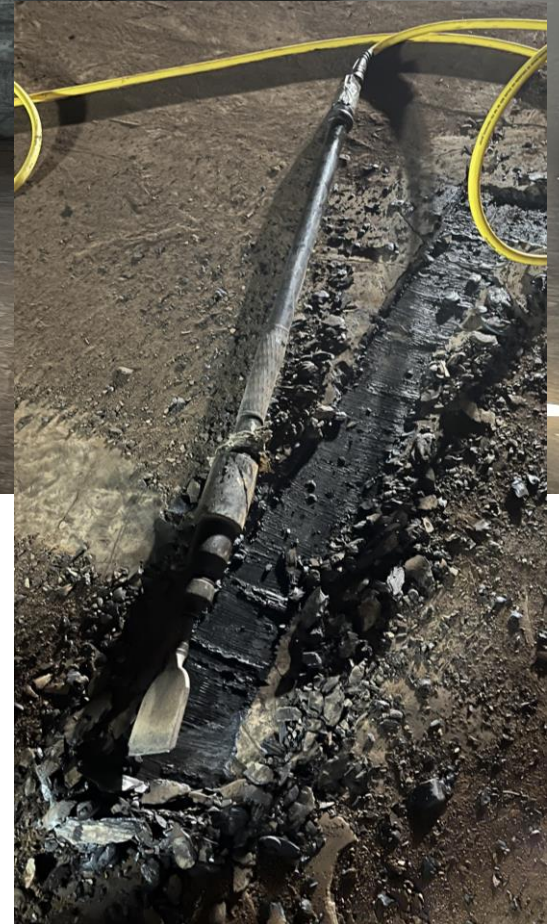


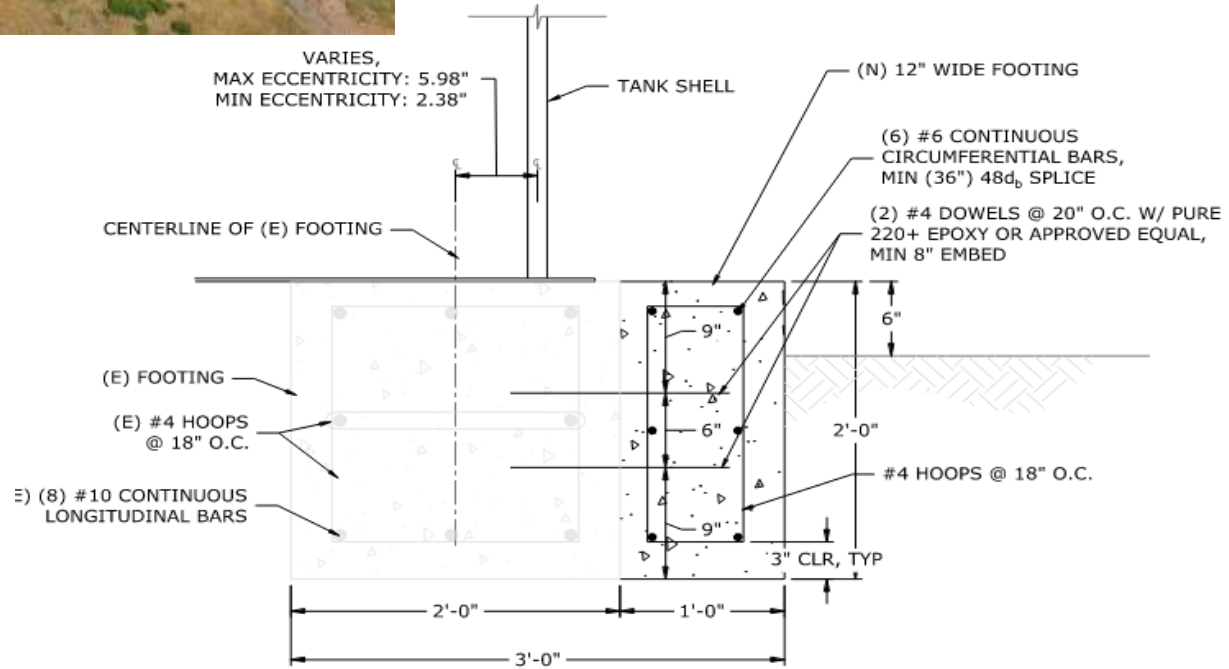






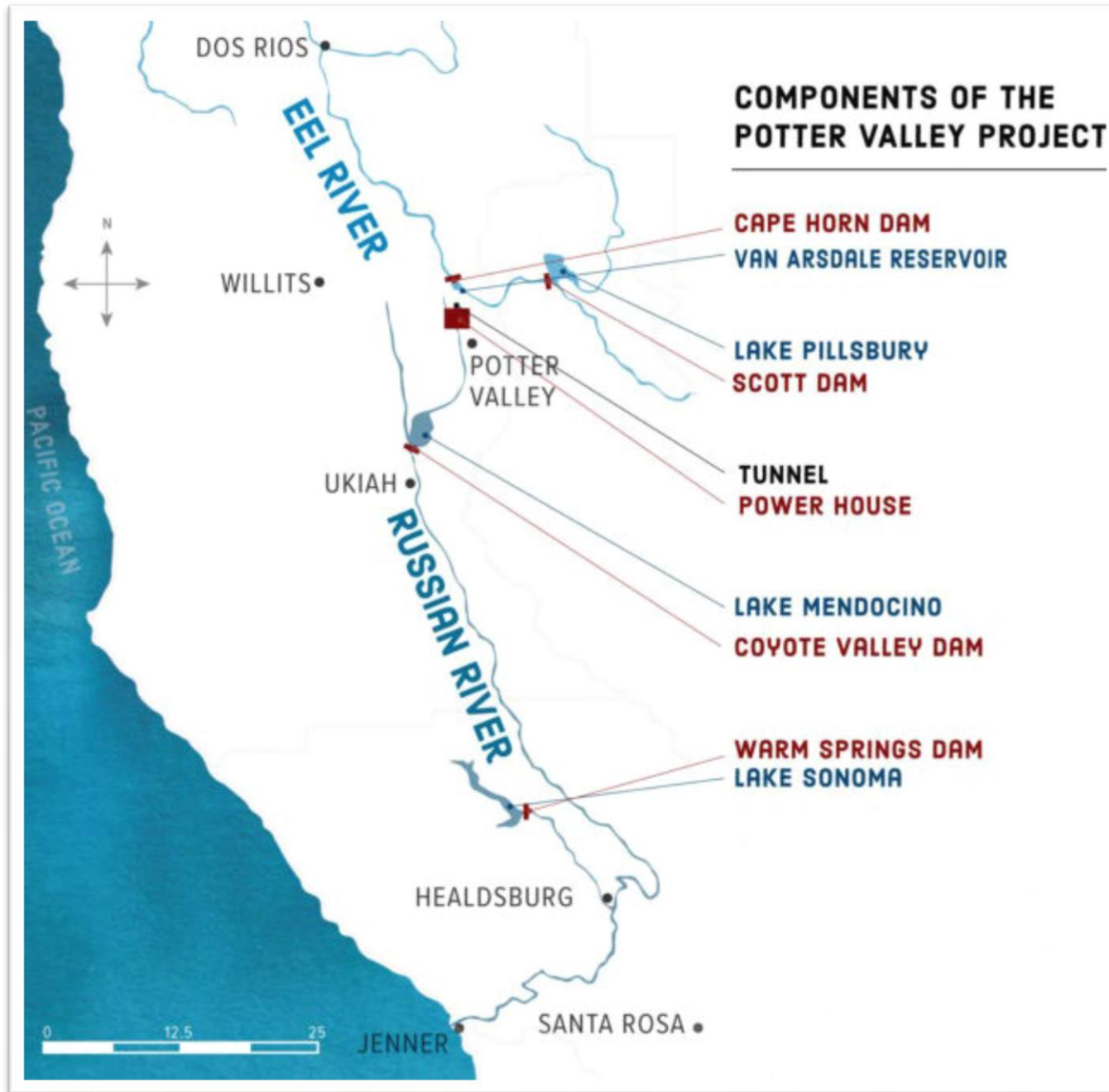




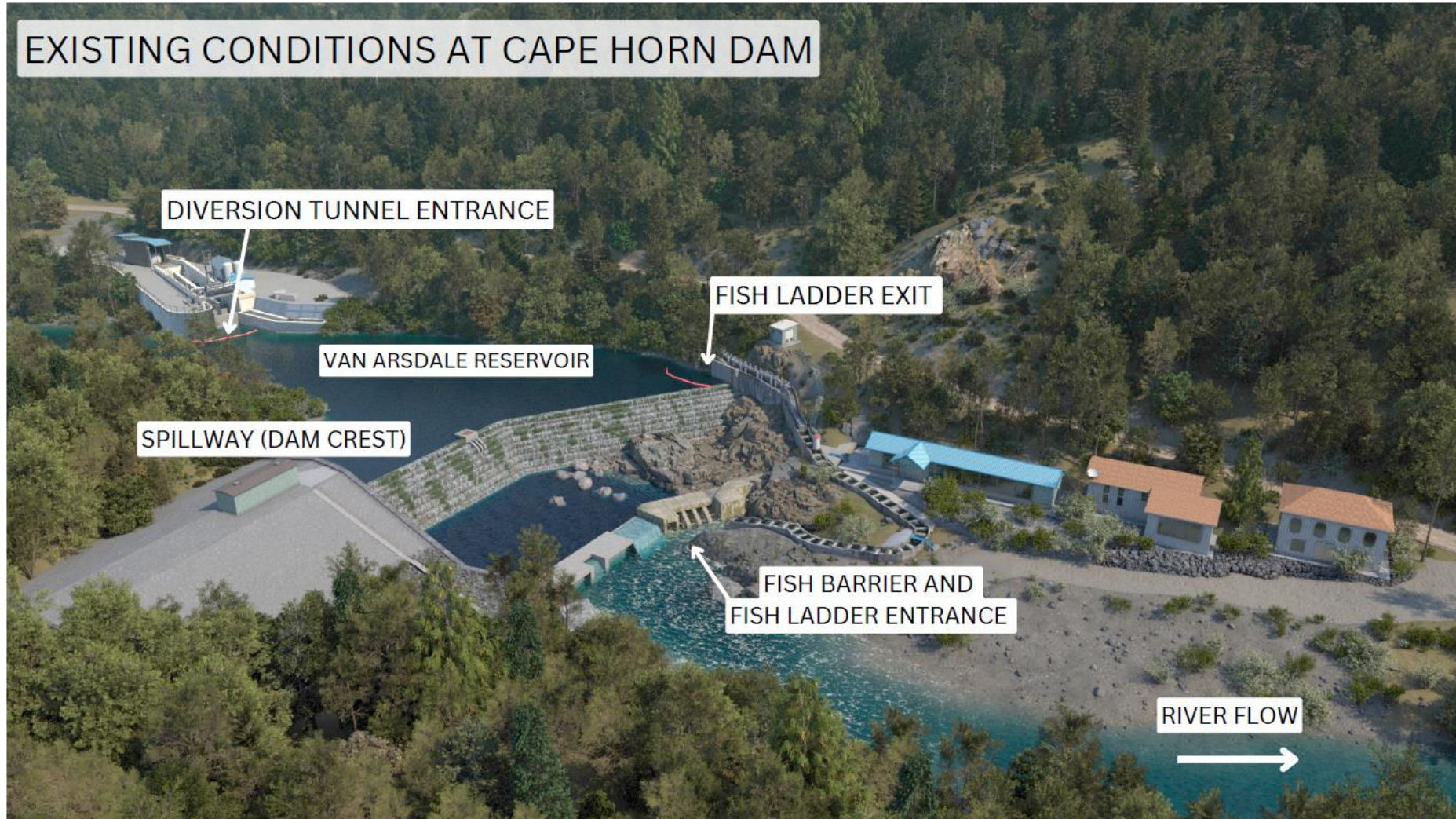


**A** TYPICAL FOOTING EXPANSION DETAIL  
 S2 1-1/2" = 1'-0"

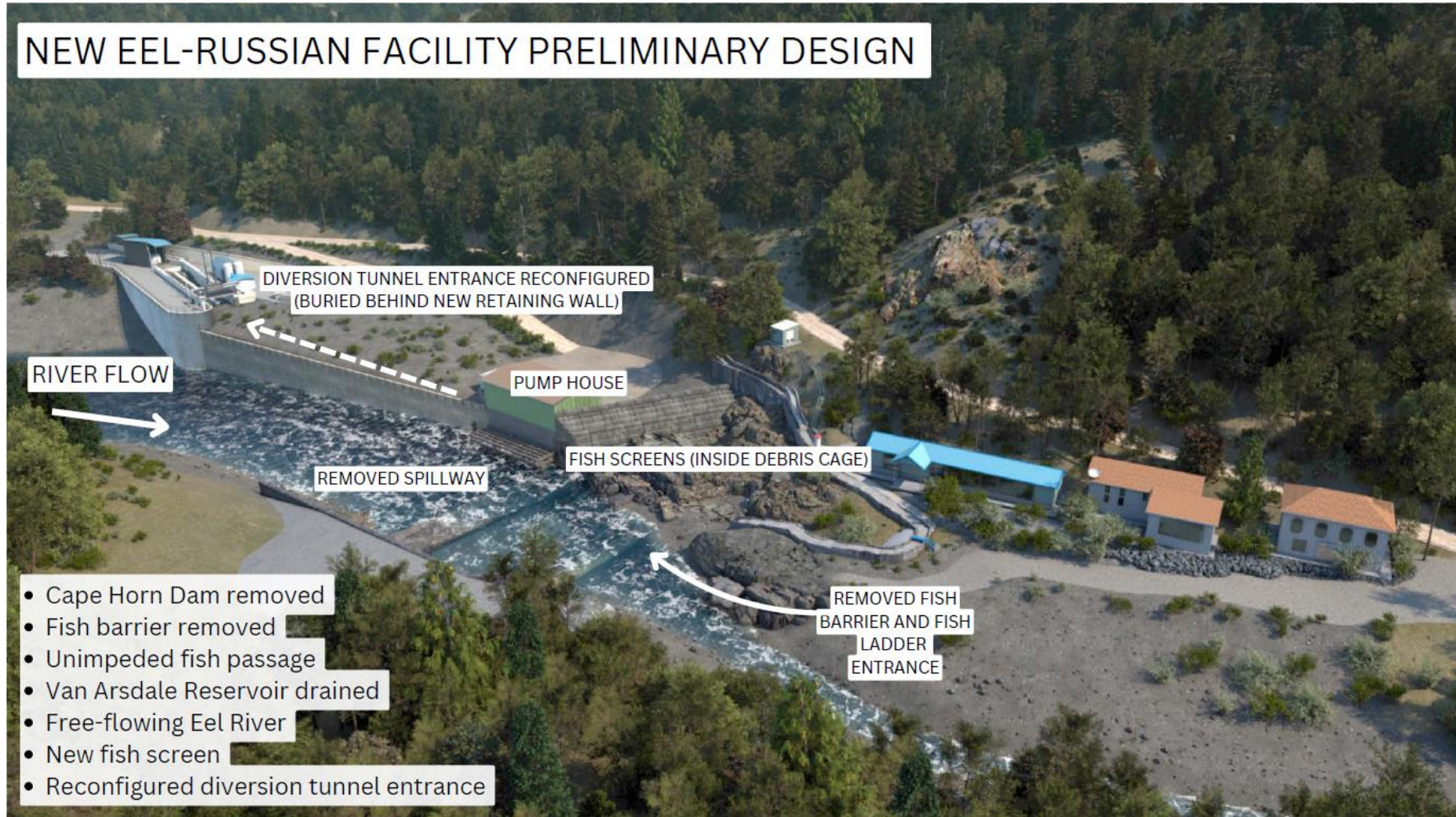




# EXISTING CONDITIONS AT CAPE HORN DAM



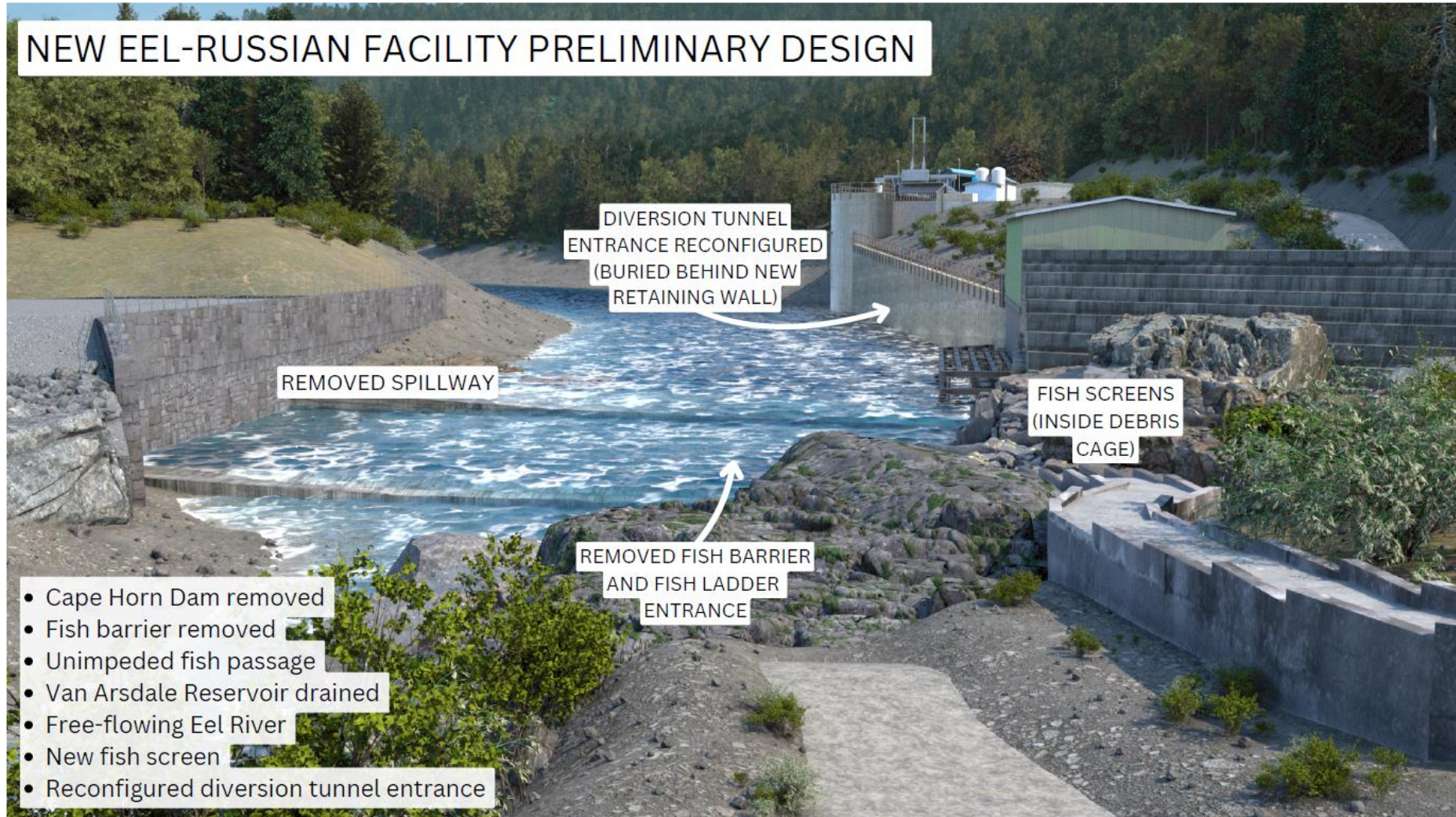
## NEW EEL-RUSSIAN FACILITY PRELIMINARY DESIGN



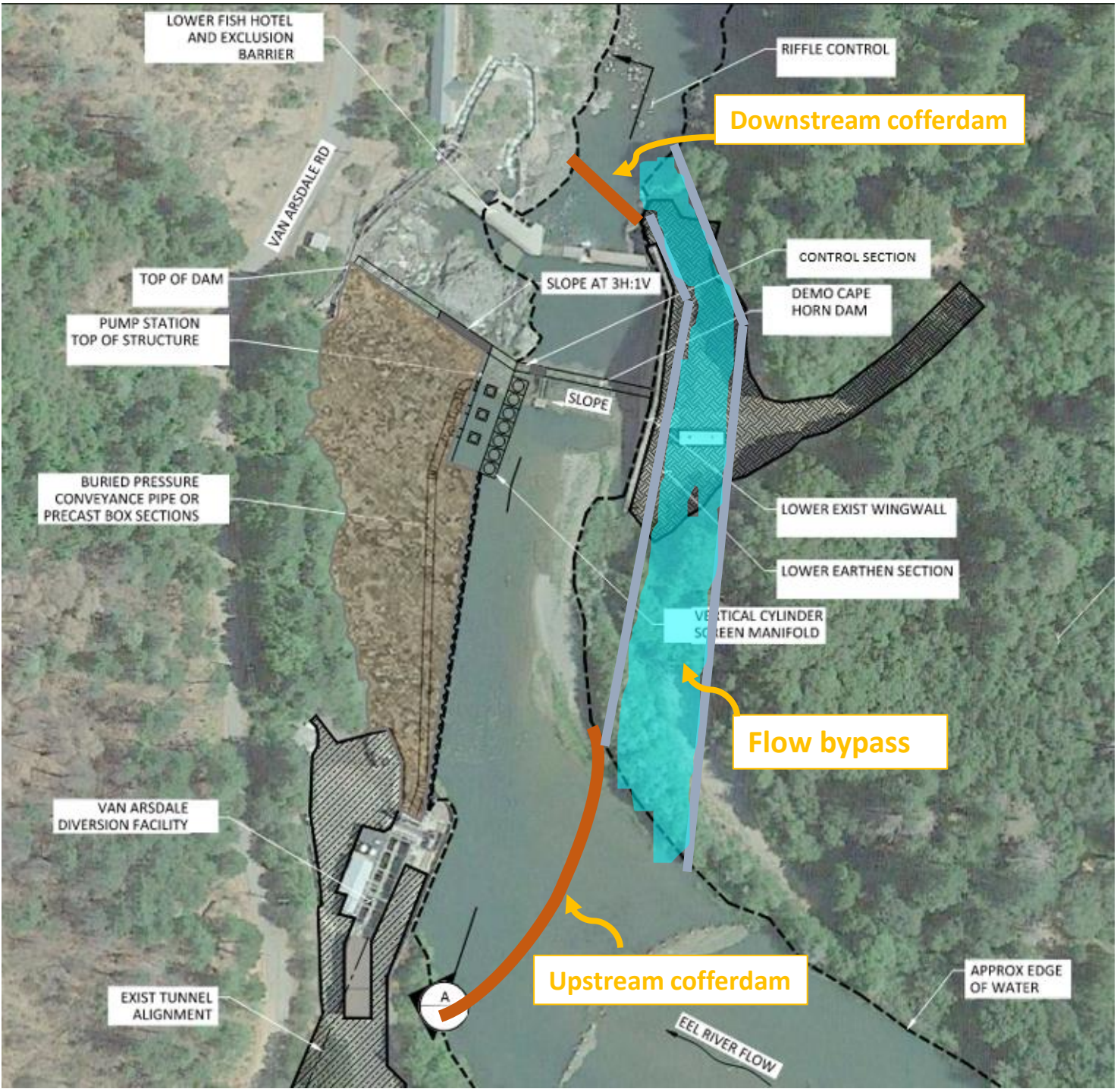
# EXISTING CONDITIONS AT CAPE HORN DAM



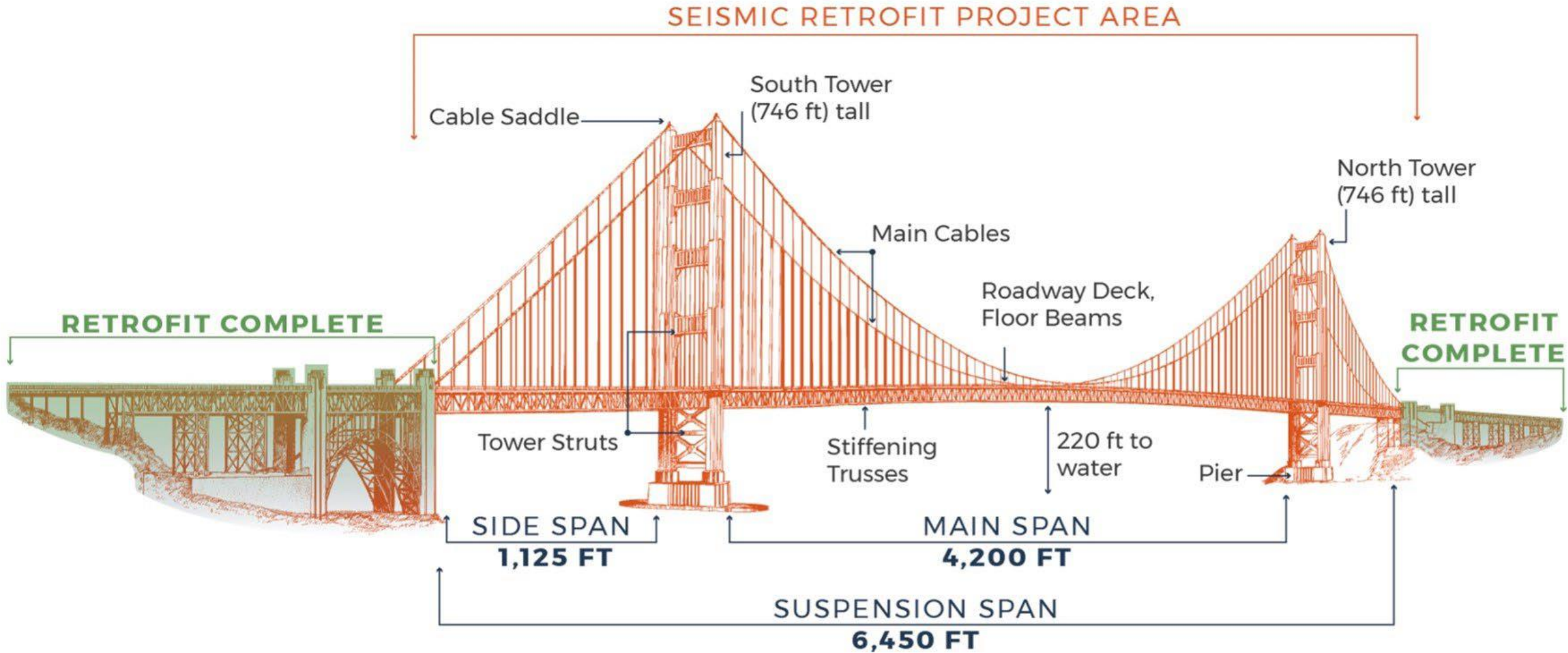
## NEW EEL-RUSSIAN FACILITY PRELIMINARY DESIGN



# Potential NERF Pump Station & Cape Horn Dam removal channel construction layout



# Golden Gate Suspension Bridge Seismic Retrofit



Once the retrofit is completed, the Bridge will be able to withstand a nearby earthquake of 8.3 magnitude.







# UCSD Shake Table



- The tallest wood building tested in the world
- Mass timber
- Rocking walls

10-story wood frame building tested on the 6DOF UCSD outdoor shaking table