



May 18, 2026

# ECA Newsletter

-CONSTRUCTING A WAY FOR A BETTER FUTURE-

## Just Like Survivor-It Is Time To Vote!

**District 4 Musings**-remember-these are John's thoughts, not the ECA's:

There are going to be five total Supervisors representing Districts 1, 2, 3, 4 & 5. To get anything done at the Sonoma County Supervisory level, you are going to have to be a part of a majority decision. Being a part of a majority requires you work with at least two other Supervisors in a manner that enables three Supervisors to reach consensus agreement on motions, proposals, budgets, and direction for the Sonoma County machine.

Who is most likely to work well with others?

Don't take my word for it, take the others that are current supervisors. All but Coursey have endorsed Schwedhelm. That tells me they believe they can work with Tom to wade through the complex issues facing the Supervisors and get to a majority position to pass budgets and policies.

Both Lands and Bagby tout their experience in Cloverdale City Politics, and committees that work with existing Sonoma County Supervisors. I believe they are both good people and decent candidates. But I wonder how they are going to fulfill their campaign promises to bring change to Sonoma County when the majority of existing supervisors do not endorse their candidacy.

I am guessing Lands or Bagby will have a much more difficult time getting support (from their supervisor colleagues) for their campaign promises than Schwedhelm. I also find it helpful to digest the Press Democrat Editorial on who the best District 4 Supervisor Candidate is. Here is the recent editorial from the PD touting Schwedhelm as the right candidate to earn your vote:

[Tom Schwedhelm stands out for 4th District supervisor — a Press Democrat editorial](#)

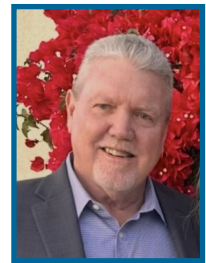
No matter how much money Gallagher throws into the District 4 Supervisor race in support of Lands, no matter how much Bagby "rails" at Trump policies and touts the support of the SEIU and the Democratic party, if the other Supervisors (who will have to work with him or her to get anything passed) do not believe in Lands and Bagby enough to endorse their candidacy, why would you vote for a future supervisor who the others do not think is the right person for the job?

Why would you choose to vote for a lone wolf rather than somebody the others want to work with?

I hope you choose to vote for Schwedhelm. That is the ACTION vote that is needed!

## John's Soapbox

*Remember my disclaimer -this Soapbox is my own opinion and does not necessarily reflect any official ECA position, nor any opinion of any ECA member firm. This is my stuff only and is intended to be thought-provoking as well as educational.*



### Inside this issue

- John's Soapbox .....1-2
- Board of Directors ..... 2
- Committee News ..... 3
- News You Can Use.....4
- ECA Events..... 5
- BoDean CRH Mixer Invitation.....5
- Safety Trainings.....7
- From the Desk of Jim Persons .....7
- Links to Support Your Business .....8
- Job Listings, Engelke & Landesign.....9
- Sustaining Members .....10
- Emergency Response Manual ..... ..11

**District 2 Musings:** remember-*these are John’s thoughts, not the ECA’s:*

District 2 has John E. King, Joanna Paun, Sylvia Lemus, and Shelina Moreda all vying for David Rabbitt’s District 2 Sonoma County Seat on the Board of Supervisors.

Here are KQED’s published candidate statements recently:

[Sonoma Supervisor District 2 Election 2026: Candidates & Issues | KQED](#)

- I look at Shelina and wonder how much she is going to be able to focus on real issues facing the Supervisors when she seems so singularly focused on “farm to table” farm products? Not that there is anything wrong with eating healthy, but there are lots of complex issues that the District 2 Supervisor will face other than her stated **“Priorities:** “Preserving farms and food systems, advocating for farmworkers’ rights, and nurturing small businesses that strengthen our communities. As a fifth-generation dairy farmer, sustaining Sonoma County’s agricultural legacy is top of mind.”
- Looking at Paun and constantly reading about the budget crisis school districts are in, does not make me feel “warm and fuzzy” that she can handle complex issues of keeping spending in line with income at the \$2 billion level that the County must do.
- Mr. King has very little experience in getting along with any of the Supervisors. I do not see him compelling a majority of the supervisors to back his ideas, nor do I see in his campaign comments, anything that would lead me to believe he backs any of their ideas moving forward.

Lemus, on the other hand, has the endorsement of the outgoing District 2 Supervisor David Rabbitt. Rabbitt showed an ability to lead, and get pragmatic votes done with the majority of his fellow Supervisors. I am certain his endorsement of Sylvia Lemus comes along with many discussions with Sylvia about how to get things done. Here is a compelling Press Democrat Editorial from the last few days on who the correct District 2 Supervisor Candidate is:

[Lemus is best prepared for 2nd District supervisor — a Press Democrat editorial](#)

Yep!

That’s All Folks-  
John

**PRESIDENT**

KIMBER CARPENTER LENNING  
Kadon Trucking

**VICE PRESIDENT**

MATT STORM  
Granite Construction

**TREASURER**

CASEY WOOD  
Ghilotti Bros. Inc

**SECRETARY**

ANTONIO MENCARINI  
Ghilotti Construction Co.

**PAST PRESIDENT**

DAN GIORDANI  
Argonaut Constructors

**CONTRACTORS**

LUCAS DOHERTY  
Gordon N. Ball Co

KEVIN GHILOTTI  
Team Ghilotti

MIKE GULLEY  
Northwest General Engineering

KRISTI PRUETT  
RCX Inc

MIKE WOLFF  
Wolff Contracting

**AFFILIATES**

RAMSAY BROWN  
Exchange Bank

JAKE BEHRENS  
Aaction Rents

JEREMIAH COOK  
Cresco Equipment Rentals

AIMI DUTRA  
Dutra Materials

CORINNA FERNANDEZ  
PACE Supply

GUY LEVINSON  
Ritchie Bros

RYAN MCKNIGHT  
Risk Strategies

KEVIN NOONAN  
Toby’s Trucking

OMAR CORONEL  
Stevenson Supply

JOHN REID  
CRH

GLENN SMITH  
Smith Dollar PC

BRENDAN SNYDER  
George Petersen Insurance

BRETT WILMES  
Soiland Materials

WALT TURNER  
North Bay Petroleum

**EXECUTIVE DIRECTOR**

JOHN BLY

**MEMBER SERVICES DIRECTOR**

MCKENZIE WEXLER

## **ECA COMMITTEE NEWS**

1. ECA Executive Committee (Officers) Meetings are recurring every month and are held every Last Tuesday from 11:00-12:00pm, in the small NCBE conference room. Next meeting will be May 26, 2026, from 11am to 12pm.
2. ECA Board of Directors meetings are recurring every month and are held every last Tuesday from 12:00-1:30pm, in the main conference boardroom at NCBE. Next meeting will be May 26, 2026, from 12:00 noon to 1:30 pm. Special guests for 5/26/26 were to include City of Santa Rosa CFO, Scott Wagner, Interim City Manager for Santa Rosa Lori Ann Farrell, and City of Santa Rosa Mayor Mark Stapp will all be discussing the City of Santa Rosa budget developments and possible “solutions” to the financial deficit Santa Rosa finds itself in. There has been a recent change in personnel at the City of Santa Rosa, so we are still figuring out exact guest details for this meeting. This affects ECA Members in that if part of the “solution” is to cut budgets for Capital Improvement projects including sewer, water, roads, etc., that would not make us very happy. I look forward to hearing OTHER possible solutions to the budget crisis for Santa Rosa. We will also hear from Mike Ghilotti and John Bly about a possible restructure of our venerable Public Officials Night. There is nothing official about possible change to our PO Night, but Mike and John will present an idea that the Board of Directors may want to consider for 2027 or 2028.
3. ECA Government Affairs Committee (GAC) meetings are recurring every month and are held every last Tuesday from 2:00pm-3:30pm in the main conference boardroom at NCBE. Next meeting will be May 26, 2026, from 2:00-3:30pm. David Guhin to attending confirmed to attend our meeting from 2-2:30.
4. ECA Specifications Committee are recurring every month and are held every last Wednesday from 3:00-4:30pm in the main conference board room at NCBE. The next meeting scheduled for Wednesday, May 27, 2026, from 3:pm to 4:30pm will be cancelled due to the big BoDean Mixer being held the same day!

### **June 2 ECA Endorsed Candidates as of 4-28-2026:**

**Sonoma County District 2 Supervisor-Sylvia Lemus**

**Sonoma County District 4 Supervisor-Tom Schwedhelm**

**Windsor Mayor-Tanya Potter**



James Gore · Follow

May 15 at 11:03 AM · 🌐



Sylvia is a true public servant leader. I've endorsed here. Please do your research and Vote!!!



Sylvia Lemus for Supervisor · Follow

May 15 at 6:54 AM · 🌐

I was thrilled to wake up this morning and see that I've earned the endorsement of The [Press Democrat](#) in my campaign for Supervisor! I have been involved in our communi... [See more](#)



PRESSDEMOCRAT.COM

PD Editorial: Lemus is best prepared for 2nd District supervisor

### NEWS YOU CAN USE

Jason Nutt is the new (Temporary) City Manager for the City of Santa Rosa and Ashle Crocker is the new City Attorney for Santa Rosa-read about the announcement here - [Santa Rosa appoints Jason Nutt to temporarily lead city, Ashle Crocker as attorney](#)

## ECA EVENTS

1. Mixer-May 27 Hosted by BoDean (a CRH Company) and Sponsored by NCBE and ECA. Event Flyer is on the next page.
2. June 21, 2026-ECA Show and Shine Car Show will be held at Julliard Park at 227 Santa Rosa, Ave. in Santa Rosa from 9:00am-3:30pm
3. July 10, 2026-The ECA Golf Tournament will be held at the Windsor Golf Course at 1340 19<sup>th</sup> Hole Drive in Windsor, CA from 11:00am-7:00p
4. November 7, 2026-The ECA Annual Days of Wine and Dozers Dinner and Auction at the Hyatt in Santa Rosa.



**WHEN**  
Wednesday  
May 27, 2026  
4:00pm-7:00pm



**WHERE**  
Mark West Quarry  
4611 Porter Creek Road  
Santa Rosa, CA 95404



**RSVP by May 22**  
to Aimi Dutra  
at [aimi.dutra@na.crh.com](mailto:aimi.dutra@na.crh.com)  
or call (628) 295-9875

**BoDeanCompany.com**

# GRANITE™



- 24-Hour Emergency Response
- Mud, Waste and Debris Removal
- Earthwork, Excavation, and Grading
- Retaining Wall Installation and Slide Repairs
- Pavement and Structural Repairs
- Drainage, Pipeline and Utility Repairs
- Asphalt and Aggregate Materials

**CONSTRUCTING OUR FUTURE**  
**EMERGENCY MANAGEMENT &**  
**ON-CALL SERVICES**

COASTAL REGION | NORTH COAST AREA | 707.467.4100

**For EMERGENCIES call:**

Matt Storm | Construction Manager | Office: 707.467.4129 | Cell: (916) 825-6509 | Matt.Storm@gcinc.com  
Lorne Chase | Construction Superintendent (Sonoma/Napa) | Cell: (707) 272-1294 | Lorne.Chase@gcinc.com  
Gary Huddle | Construction Superintendent (Lake/Mendocino) | Cell: (707) 272-0136 | Gary.Huddle@gcinc.com

## ECA & NCBE SAFETY & EDUCATION TRAINING

ECA MEMBERS PAY THE NCBE PRICE

### MAY

Wednesday 5/20: [Scaffolding Training “Qualified Person” - English and Spanish](#) 1 pm - 3 pm

Thursday 5/21: [Latinos in the Workplace - Leading through Uncertainty](#) 7:30 am - 11:30 am

Thursday 5/28: [Trenching/Excavation “Competent Person” - English and Spanish](#) 9 am - 11 am

### JUNE

Monday 6/8: [Fall Protection “Competent Person” - English](#) and Spanish 9 am - 11 am

Tuesday 6/9: [CPR + First Aid May - English and Spanish](#) 9 am - 11 am

Wednesday 6/10: [Confined Space “Competent Person” - English and Spanish](#) 1 pm - 3 pm

Wednesday 6/17: [Scaffolding Training “Qualified Person” - English and Spanish](#) 1 pm - 3 pm

Tuesday 6/23: [Trenching/Excavating “Competent Person” - English and Spanish](#) 9 am - 11 am

Thursday 6/25 (Day 1; 8:30 am - 5 pm) & Friday 6/26 (Day 2; 1 pm - 4 pm): [OSHA 10 Hour Construction - English and Spanish](#) BOTH DAYS ATTENDANCE REQUIRED FOR CERTIFICATION

---

## From the Desk of Jim Persons

### Spiders, Bugs and Hidden Hazards, OH My!

What do spiders and hidden hazards have in common? They are two completely different things. Well, I am sure most of you have heard about spiders being located in some work areas, and believe it or not, these are considered hazards.

To read more: [Click HERE](#)



## USEFUL LINKS TO SUPPORT YOUR BUSINESS

- A. Resilient 37 Policy Committee Meetings (open to the public) --link [State Route 37 Policy Committee - Sonoma County Transportation Authority](#)
- B. Metropolitan Transportation Commission website-link [Meetings & Events | Metropolitan Transportation Commission](#)
- C. Sonoma County Transportation Authority-link [Sonoma County Transportation Authority | SCTA](#)
- D. Transportation Authority of Marin Website-link [Transportation Authority of Marin](#)
- E. Marin Builders Exchange website-link [Home - Marin Builders Association, CA](#)
- F. North Coast Builders Exchange website-link [North Coast Builders Exchange – NCBE Online](#)



**ANNOUNCING OUR NEW LOCATION  
IN HEALDSBURG**  
**@ 13666 HEALDSBURG AVE**

WE'RE BRINGING PREMIUM ROCK, AGGREGATE & CONCRETE  
TO NORTH COUNTY & THE HEALDSBURG AREA  
TO BETTER SERVE CONTRACTORS, LANDSCAPERS & DIY'ERS

- **NOW ACCEPTING ASPHALT & CONCRETE FOR RECYCLING & REUSE**
- **SAND & GRAVEL ALSO SUPPLYING THE PRODUCTS YOU'VE COME TO KNOW & LOVE**

*James* *Wendel* *Jonathon*



THE TRAPPE FAMILY  
IS PROUD TO SERVE YOU.  
(707) 887-2207  
[CANYONROCKINC.COM](#)

**ONE OF THE LAST  
LOCALLY-OWNED, FAMILY-OWNED  
QUARRIES IN SONOMA COUNTY**



A Law Firm  
**BUILT**  
For Contractors

- Contracts & Collections
- Business Formation & Licensing
- Litigation & Disputes
- Mechanics Lien & Bond Claims
- Employment & Workplace Safety

**\$ SmithDollar | (707) 522-1100**

## JOB LISTINGS



Date posted: April 15, 2026

Salary: \$95,000 to \$135,000 depending on experience

Job description: Project Manager

### Position Summary

The project manager is responsible for planning, coordinating and executing construction projects from inception through completion. This role ensures that all work meets contractual obligations, schedule requirements, quality standards, budget and safety protocols. Acting as the central liaison between owners, engineers, field teams, subcontractors and stakeholders. The project manager drives the project success through disciplined leadership, strategic planning and clear communication

### Application Question(s):

- Do you have a degree in Construction Management?
- Do you have any contracting experience with grading, paving and underground utility construction?

To Reply, Email: [jerry@engelkeconstruction.com](mailto:jerry@engelkeconstruction.com)



Landesign Construction & Maintenance is growing and looking for a hands-on Construction Project Manager / Designer to lead high-quality landscape projects in Sonoma County. Must have 3–5+ years in landscape construction, strong estimating skills, and the drive to protect margin and deliver results. Salary \$90K–\$120K plus incentives and full benefits package. To apply, please send your resume to Kelley Lazzareschi at [kelley.l@landesign-inc.com](mailto:kelley.l@landesign-inc.com) or call 415-412-6332.



## CORPORATE MEMBER SPONSORS



## BUSINESS MEMBER SPONSORS



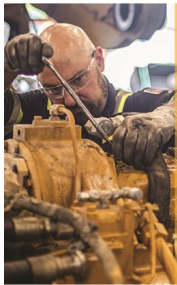
# EMERGENCY RESPONSE MANUAL 2025—2026

In the event of an emergency, we have put together the Emergency Response Manual to help our community receive quick service from our members. The manual is sent to city and county agencies in case of an emergency so they will know who to call for services, equipment and materials.

Click [HERE](#) for the 2025-2026 manual.

## » CAT FINANCIAL

Visit us online at  
[Petersoncat.com/0-for-36](http://Petersoncat.com/0-for-36)



**0% FOR 36 MONTHS**  
**WITH NO PAYMENTS FOR THE FIRST 6 MONTHS\***  
On repairs and new or remanufactured Cat® Parts, with or without service. For a limited time, use your Cat® Card account on qualifying repairs and new or used remanufactured Cat parts. Ends 12/31/25.  
*\*Additional terms and conditions apply.*

## Providing creative solutions for complex environmental issues.



(Formerly Edd Clark & Associates)

The ECA Group is an integrity-driven group of environmental professionals. We put our clients first to help resolve their environmental issues. We are geologists, environmental engineers and scientists with the expertise to effectively manage complex environmental sites. We have been providing Clients professional service and problem-solving for over 30 years.

### Services:

- Phase I Environmental Site Assessment (ESA)
- Soil, Groundwater, Soil Vapor and Indoor Air Quality Investigations
- Remediation Services
- Hydrogeologic Assessments
- Watershed Management
- Project and Construction Management
- Indoor Air Compliance

Contact: (800) 474-1448 ~ (707) 792-9500  
505 San Marin Drive, Suite A200, Novato, CA 94945  
[info@edclarkandassociates.com](mailto:info@edclarkandassociates.com)



**EBA ENGINEERING - SUSTAINABLE SOLUTIONS FOR AN EVOLVING WORLD**

**EBA Engineering**

**Aerial Video & Stills**  
**Video & Commercial Production**  
**Photography ★ Animation**  
**Info & Motion Graphics**  
**Virtual Events ★ Media Services**

**SOUNDIDEASMEDIA.TV**  
**707.321.6803**

Warm Springs Dam, Sonoma County

## NORTHERN CALIFORNIA ENGINEERING CONTRACTORS ASSOCIATION

**John Bly, Executive Director**  
email: [john@nceca.org](mailto:john@nceca.org)

**McKenzie Wexler, Member Services Director**  
email: [mw@nceca.org](mailto:mw@nceca.org)

**Susan Maners, Bookkeeper**  
email: [accounting@nceca.org](mailto:accounting@nceca.org)

**Postal Address: P.O. Box 8249 Santa Rosa, CA 95407 ~Phone: 707.546.5500**